

## ICAM and Missler Software Sign Marketing Agreement

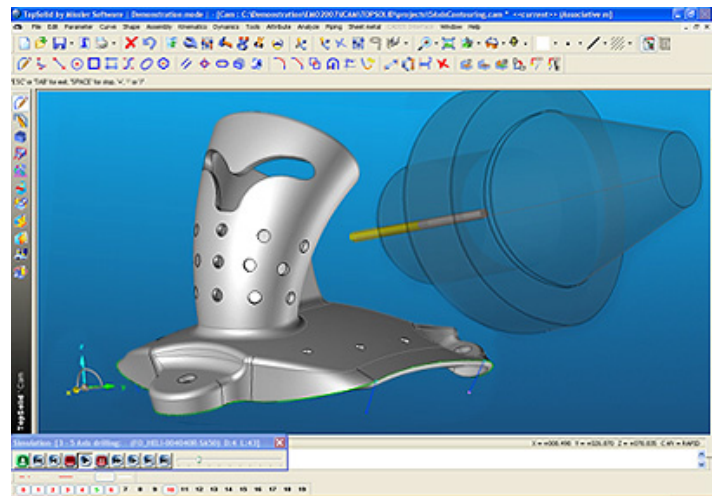
**Montreal, February 11, 2008** – ICAM Technologies Corporation (ICAM) and Missler Software are pleased to announce that they have entered into a Marketing Agreement that will provide ICAM access to TopSolid'Cam's software architecture in order to develop post-processors for lathe, mill and Mill/Turn machines for TopSolid'Cam's worldwide customer base.

TopSolid'Cam offers a unique CAD / CAM solution capable of supporting tool path programming for turning, milling as well as complex Mill / Turn applications, including 5-axes contouring and merging lathes.

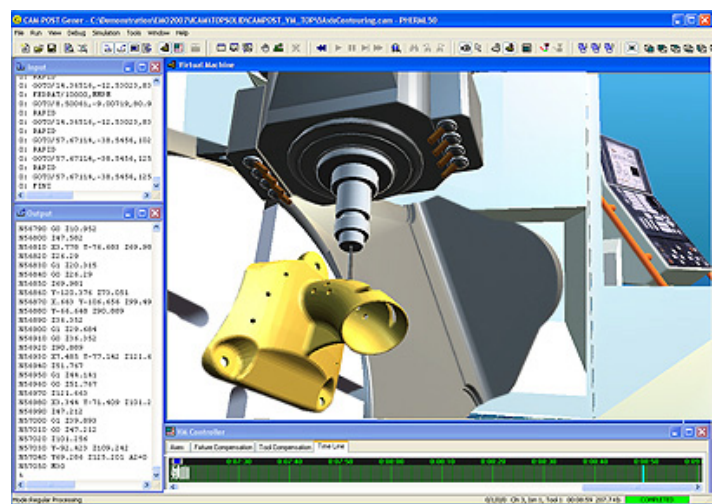
The sharing of technical knowledge and other resources will allow ICAM to develop certified TopSolid'Cam post-processors that will ultimately enable end-users to maximize their machine tool investments.

This newly formed relationship will allow customers to benefit from ICAM's extensive NC post-processing experience with advanced multi-axes machining applications and techniques such as path planning, high-speed machining, tool-tip programming, coordinate frame transformations, NURBS interpolation and arc fitting of point-to-point data.

Additionally, deploying Virtual Machine® as an integrated productivity tool to ICAM's NC post-processing technology, delivers a powerful machine tool simulation environment that enables TopSolid'Cam end-users to optimize and test NC programs against collisions and over-travel automatically during post-processing.



TopSolid'Cam – 5-Axes Contouring Example



Graphical NC Post-Processing - ICAM Virtual Machine®

According to Arnaud de Boisboissel, International Sales Director for Missler Software “Working with ICAM offers an additional service to our customers – the possibility of working with the leading post-processing developer in the industry. Our customers will now have access to a support network consisting of TopSolid'Cam VARs and ICAM where they can efficiently obtain high-performance post-processors. ICAM has a strong reputation in the NC manufacturing marketplace and we are confident that this partnership will help us increase the market penetration of TopSolid'Cam within the complex machining sector.”

“We are pleased to work with Missler Software” adds Jean-Nicolas Ruby, Technical Project Manager at ICAM. “TopSolid'Cam is a reputable CAM software driving machines produced by all the major machine tool manufacturers. We have completed an extensive TopSolid'Cam technical training program and we are positive that we will provide high-performance post-processors to all TopSolid'Cam customers.”

### About Missler Software

Missler Software is one of the leading global suppliers of CAD, CAM and ERP solutions. The company's product lines include TopSolid and GOelan. Missler Software offers a uniquely integrated solution for the mechanical engineering industry (general mechanical design, special machinery, tooling, boilerwork ...) and for sheet metal and wood industries. Thanks to its advanced technology and its fully integrated solution, Missler Software is experiencing rapid growth in the global CAD / CAM market. For further information contact [international@topsolid.com](mailto:international@topsolid.com) or visit [www.topsolid.com](http://www.topsolid.com).

## **About ICAM Technologies Corporation**

For over 35 years ICAM Technologies Corporation has been specializing in the development and implementation of advanced NC post-processing solutions for manufacturers in major industries around the world. ICAM has added an integrated machine tool simulator, Virtual Machine®, with the provision for Machine Code Data (MCD) verification driven with ICAM Control Emulator™ to its product mix that further strengthened its position in the NC manufacturing market. ICAM customers benefit from dramatic improvements to CNC machine optimization, NC programmer productivity and manufacturing process efficiency. ICAM's unique technology and services provide its customers and industry partners with the competitive edge that their business operations and customers demand.

## **Contact Information**

ICAM Technologies Corporation  
Phil Masella  
Marketing Communications Manager  
Tel: + 1 (514) 697-8033  
phil@icam.com

Missler Software  
Ellen Marie Hickey  
Marketing Manager  
Tel: +33 1 60 87 20 32  
em.hickey@topsolid.com

---